



SERVING THE FOOD INDUSTRY SINCE 1951

## Countertop Electric Hot Plates

ITEM:	48556	49266	49267
MODEL:	CE-CN-EHP15 208	CE-CN-EHP24 240	CE-CN-EHP36 240



48556



49266



49267

**Quick and efficient solution for fast, even heating.**

**A perfect addition to any food service operation.**

- 2 kW round plate elements with easy-to-clean flat surface.
- Provides a solid flat surface for fast, even heating.
- Round plates are 9" (229 mm) diameter for maximum pan contact.
- Infinite heat controls for maximum cooking flexibility.

**FEATURES:**

- Heavy Duty Metal Knobs
- Incrementless Heat Adjustment
- 4" (102 mm) adjustable Stainless Steel Feet

Telephone: 1-800-465-0234

Fax: (905) 607-0234

Email: sales@omcan.com

Website: www.omcan.com



Authorized Dealer



48556

Made in China

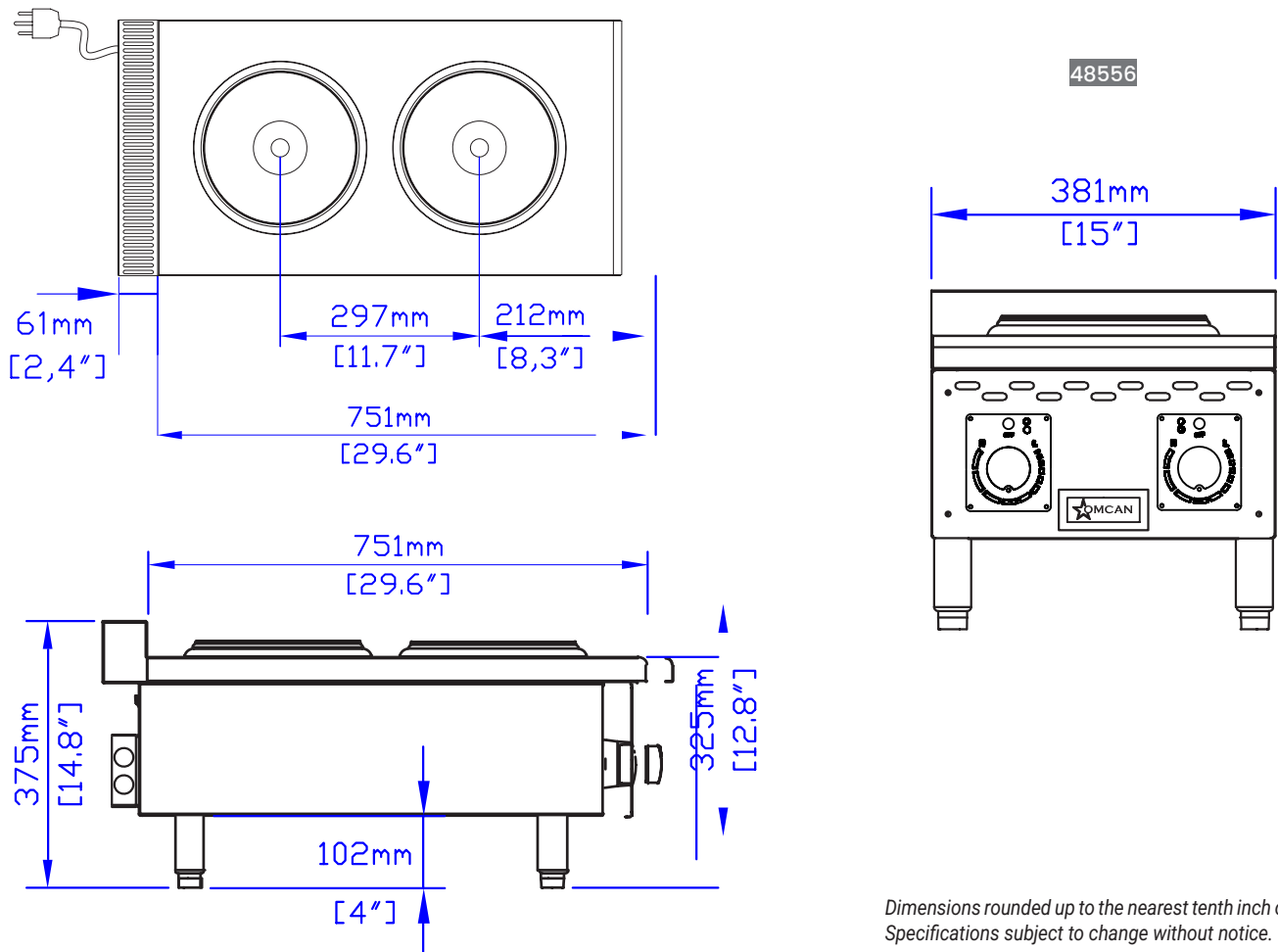
(Version 2026.04)

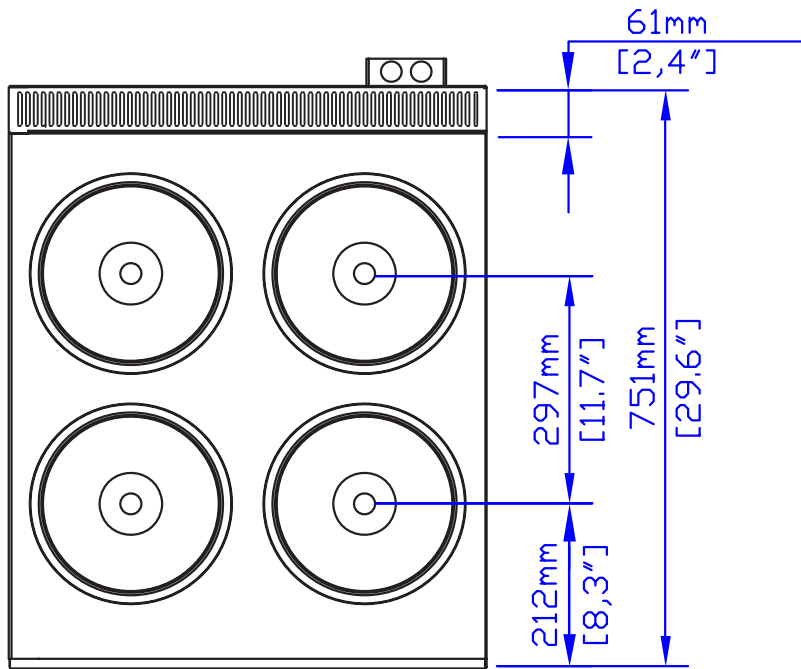
Page 1 / 4

## TECHNICAL SPECIFICATION

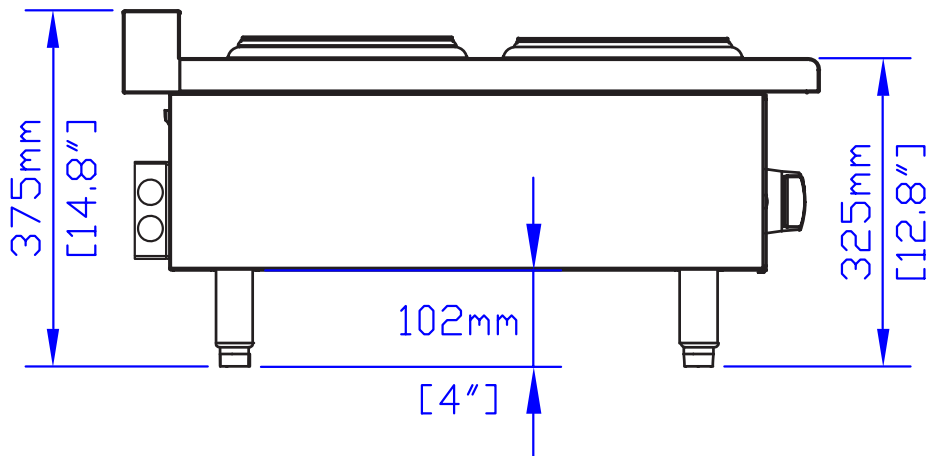
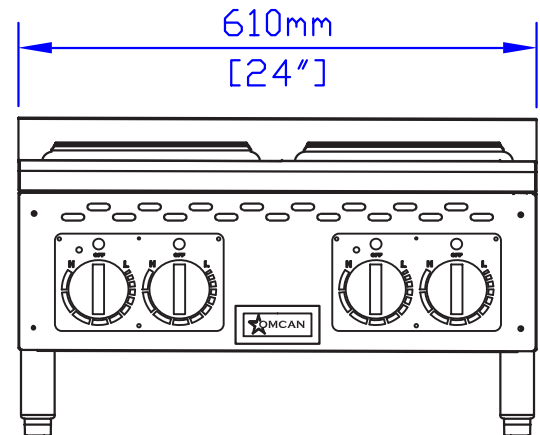
Item	48556	49266	49267
Features	2 Burners	4 Burners	6 Burners
Model	CE-CN-EHP15 208	CE-CN-EHP24 240	CE-CN-EHP36 240
Power	4,000 W	8,000 W	12,000 W
Amperage	16.7 A	33.3 A	50 A
Electricals	208V / 60 Hz / 1 Ph	240V / 60 Hz / 1 Ph	
Plug Type	NEMA 6 - 30P	bare-wired (junction box provided)	
Net Dimensions	15" x 29.6" x 14.8" (381 x 751 x 375 mm)	24" x 29.6" x 14.8" (610 x 751 x 375 mm)	36" x 29.6" x 14.8" (914 x 751 x 375 mm)
Net Weight	47 lb (21.5 kg)	86 lb (39 kg)	132 lb (60 kg)

## TECHNICAL DRAWING

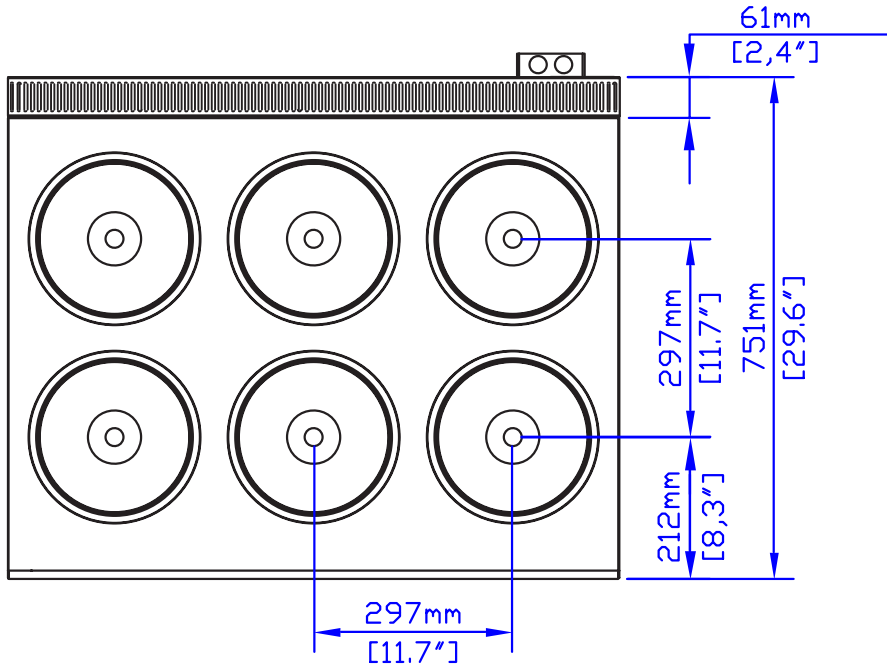




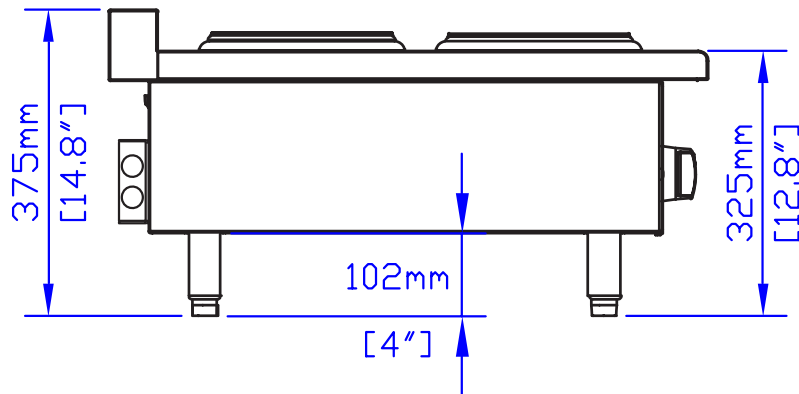
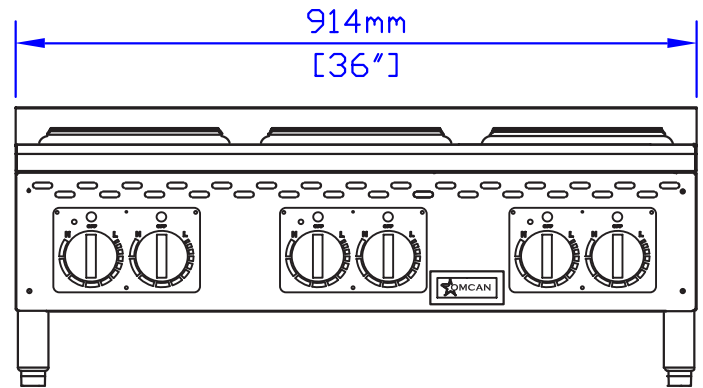
49266



Dimensions rounded up to the nearest tenth inch or millimeter.  
Specifications subject to change without notice.



49267



Dimensions rounded up to the nearest tenth inch or millimeter.  
Specifications subject to change without notice.